



Since 1949



# Welcome!

---

---

## Table of Contents

Introduction.....	1
Environmental Statement.....	2
Morgan.....	3
Morgan II.....	4
Morgan II Tall.....	5
Venetian II.....	6
Venetian II Tall.....	7
Venetian Bowl/Rectangle.....	8
Jewel.....	9
Aegean.....	10
Gainey Grande.....	11
China Bowl.....	12
Portofino.....	13
Portofino Page 2.....	14
Mesa Bowl/Morgan Bowl.....	15
Flower Bowl.....	16
Azalea.....	17
Cylinder.....	18
Ash & Trash.....	19
GFRC.....	20
Terms & Conditions.....	21

# PLANTERS 101

There is nothing like a classic, handcrafted planter to bring out the beauty of any space. Incorporating design elements from ancient Roman vessels to iconic mid-century ceramics, our incomparable modern styles bring life to any commercial or residential environment. From our substantial construction to our extensive range of rich glazes and sizes, Gainey Ceramics can meet the needs of any design professional or project.

As an industry legend, we have proudly handcrafted our ceramic planters in our California facility for over 60 years. Always responding to the changing tastes and trends in the marketplace, we also developed a complete line of lightweight fiberglass products as well as glass-reinforced concrete planters (GFRC).

At Gainey, we strive to manufacture our products utilizing the most environmentally-friendly practices available. We recycle everything from our broken bisque to water, glaze and even the heat from our kilns. Along with being manufactured locally in California, our ceramics contain 25% recycled materials making them some of the “greenest” products on the planter market and eligible for LEEDS credits. For more complete details, please check out our green statement at;

[www.gaineyceramics.com](http://www.gaineyceramics.com).

Gainey Ceramics Inc  
1200 Arrow Hwy  
La Verne, CA 91750-5217  
800 451-8155  
909 593-3533



Revision 06/24/2010

# Gainey Ceramics, Inc. Green Corporate Commitment

Gainey Ceramics has been “Green” for many years. We have done this due not only to California’s strict emission controls, nor just to be trendy, but to be a smart, sustainable, manufacturer.

To serve our customers needs, we provide planters made from three materials: ceramic, fiberglass and glass-fiber-reinforced concrete (GFRC). Of these materials, ceramic is the greenest; fiberglass and GFRC although considered clean products, may not qualify as green. GFRC and fiberglass are not produced in our California facility.

Gainey’s ceramic products are produced 100% at our factory in California. All of our clay bodies contain in excess of 25% recycled materials. Clay materials come from California, Texas and Georgia. All water used in the production process at our facility is recycled back into our clay; we do not dispose of any waste water from the production process. Any ceramic product lost in the production process is re-ground into powder and reintroduced into the clay.



In our spraying operations we, do not vent our spray booths to outside air. Glaze overspray is trapped in fabric filters and is recycled. After the air passes through these filters it continues through a series of cartridge filters, at that point it is so clean the air is vented inside our facility. Over the years, Gainey has significantly reduced hazardous materials used in our glazes. Ceramic glaze coatings contain zero volatile organic compounds (VOC).

Over the last few years, we have also purchased more energy-efficient kilns that have lower emissions. These kilns are so efficient that Gainey has established the standard of Best Available Control Technology (BACT) for oxides of nitrogen (NOX) and oxides of sulfur (SOX) emissions within the Southern California Air Quality Management District (SCAQMD). This is the highest standard available and dictates vigilant monitoring of all emissions from our manufacturing process.



Our drying process has been completely reinvented; we now use waste heat from our tunnel kiln to keep our drying rooms at a constant 150 degrees.

Gainey has taken the steps to comply with the EPA standards under the 1990 requirements of the Clean Air Act. We are so clean that we are no longer required to function as a manufacturing company under Title 5 status.

As we develop new products, we will continue to move forward with sensitivity to the environment and a commitment to do the right thing.

We are a proud member of the US Green Building Council.



# Morgan

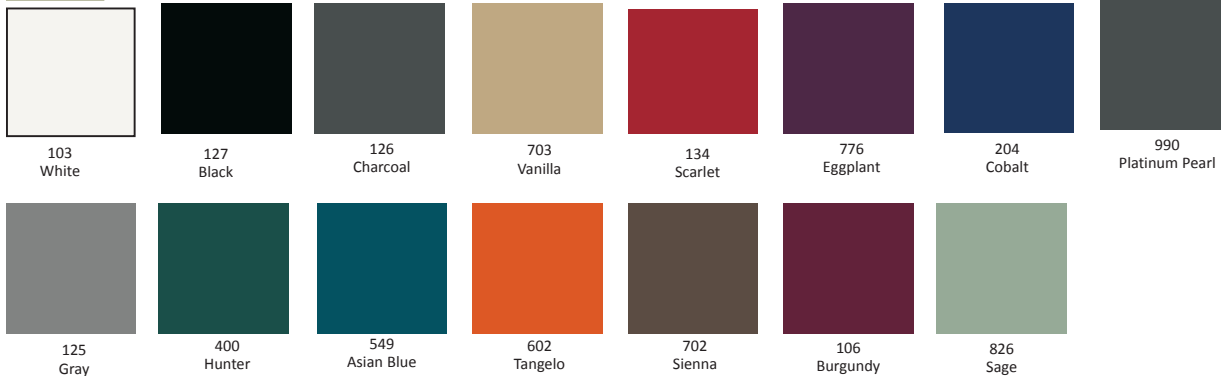


With its clean lines and timeless appeal, the Morgan collection is fast becoming the new Gainey classic. It is available in eco-friendly ceramic.

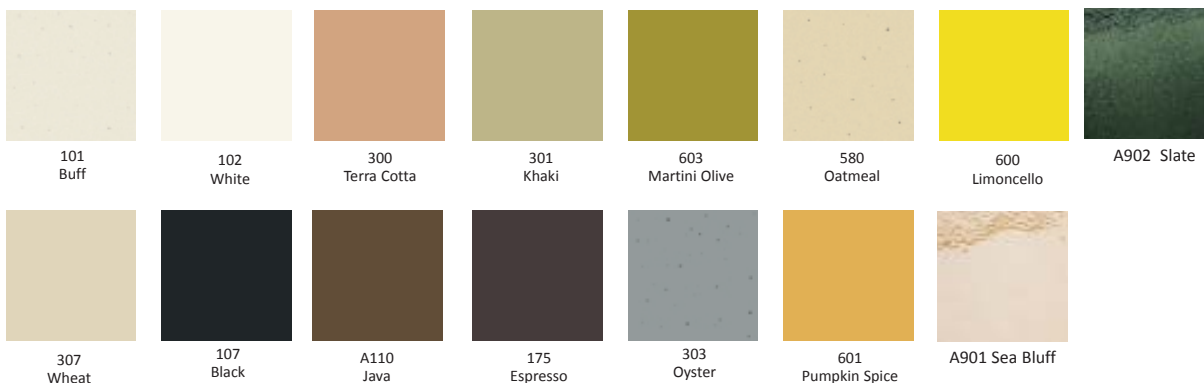
## Ceramic

P/N	OD	Top ID	Bottom ID	IH	Wt. lbs.	Saucer	Plexi
MG-08	7 3/4"	7"	3 1/2"	6 1/4"	4	SC-08	4"
MG-10	10"	9"	5 1/2"	7 1/2"	8	SC-10	6"
MG-12	12 1/2"	11 1/2"	7 1/4"	10"	14	SC-12	8"
MG-15	15"	14"	9 3/4"	10 1/2"	19	SC-12	10"
MG-18	17 3/4"	16 1/2"	12"	16"	33	SC-14	12"
MG-22	21"	19 3/4"	13 1/2"	18 3/4"	58	SC-16	14"

### Gloss



### Matte



Color variations are inherent characteristics of all planters. Colors are represented as accurately as possible. Photographic procedures may alter the colors and images shown may vary slightly from the photo. For best results please call for a sample.

# Morgan II

This updated version of our Morgan series features improved sizing, rounded edge, felt bottom and reinforced fiberglass. The eight standard Morgan II colors include a UV, scratch resistant, durable finish.

P/N	OD	Top ID	Bottom ID	IH	Wt. lbs.	Plexi
F-MG II-06	6 1/2"	5 1/2"	2 3/4"	5 "	1	4"
F-MG II-08	9"	7 1/2"	4 1/2"	7 1/4"	1.5	6"
F-MG II-10	11 1/4"	9 3/4"	6 3/4"	8 3/4"	2.75	8"
F-MG II-12	14"	12 1/4"	8 1/2"	11 1/4"	3.75	10"
F-MG II-15	16 3/4"	14 1/4"	11 "	14 "	5.5	12"
F-MG II-18	19 1/4"	17"	13"	16 1/2"	8.75	14"
F-MG II-22	22 3/4"	20"	15 3/4"	19 3/4"	12.5	18"
F-MG II-26	27 1/2"	23 3/4"	19"	22 3/4"	16	20"



Photo courtesy of Natural Ambiance

## Higher Grade Paint

**Gloss**

103 White    127 Black    954 Golden Pearl    953 Black Pearl    952 Silverado

**Matte**

107 Black    A110 Java    175 Espresso

## Standard Fiberglass Colors

**Gloss**

103 White    104 Clear    106 Burgundy    126 Charcoal    703 Vanilla    134 Scarlet    776 Eggplant    627 Golden Bronze    701 Mint

127 Black    952 Silverado    400 Hunter    549 Asian Blue    602 Tangelo    702 Sienna    980 Topaz    826 Sage    204 Cobalt

**Matte**

101 Buff    102 White    300 Terra Cotta    301 Khaki    603 Martini Olive    580 Oatmeal    600 Limoncello

307 Wheat    601 Pumpkin Spice    107 Black    A110 Java    175 Espresso

Color variations are inherent characteristics of all planters. Colors are represented as accurately as possible. Photographic procedures may alter the colors and images shown may vary slightly from the photo. For best results please call for a sample.

# Morgan II Tall

This updated version of our Morgan series features improved sizing, rounded edge, felt bottom and reinforced fiberglass. The eight-standard II colors include a UV, scratch resistant finish.

## Morgan II Tall

P/N	OD	Top ID	Bottom ID	IH	Wt. lbs.	Plexi
F-MGTII-24	13 3/4"	11 3/4"	8 1/2"	24 "	7	10"
F-MGTII-32	17 1/2"	14 3/4"	11 1/4"	32 1/2"	12	12"
F-MGTII-40	23 1/4"	20"	15 1/4"	40" 1/4	22	15"

The Morgan II Tall series comes with an internal removable shelf, to raise your plants to a new level.

Photo courtesy of Natural Ambiance

**Higher Grade Paint**

**Gloss**

103 White    127 Black    954 Golden Pearl    953 Black Pearl    952 Silverado

**Matte**

107 Black    A110 Java    175 Espresso

**Standard Fiberglass Colors**

**Gloss**

103 White    104 Clear    106 Burgundy    126 Charcoal    703 Vanilla    134 Scarlet    776 Eggplant    627 Golden Bronze    701 Mint

127 Black    952 Silverado    400 Hunter    549 Asian Blue    602 Tangelo    702 Sienna    980 Topaz    826 Sage    204 Cobalt

**Matte**

101 Buff    102 White    300 Terra Cotta    301 Khaki    603 Martini Olive    580 Oatmeal    600 Limoncello

307 Wheat    601 Pumpkin Spice    107 Black    A110 Java    175 Espresso

Color variations are inherent characteristics of all planters. Colors are represented as accurately as possible. Photographic procedures may alter the colors and images shown may vary slightly from the photo. For best results please call for a sample.

# Venetian II

Available in a wide variety of sizes, shapes, finishes and colors, the Venetian is quite possibly our most versatile line of fiberglass containers. Whichever configuration you choose, it is designed to bring out the best in any traditional or contemporary setting.

## Venetian II

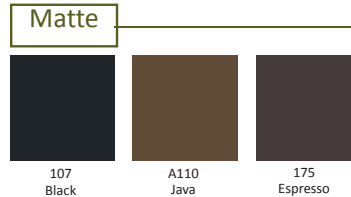
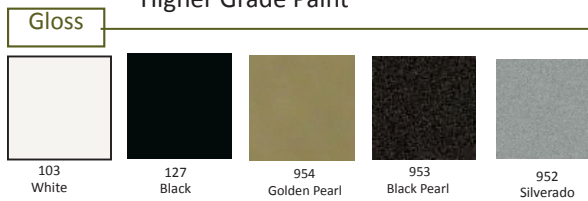
P/N	Top OL	Top IW	Bottom IW	IH	Wt. lbs.
F-VN II-10	10 1/2"	8 1/2"	8"	9 3/4"	2.5
F-VN II-14	14"	11 1/4"	10 3/4"	12 3/4"	8
F-VN II-18	18"	14 1/4"	14"	16 "	13
F-VN II-22	23 1/4"	18 3/4"	17"	22 1/2"	21

## Venetian II Square Saucers

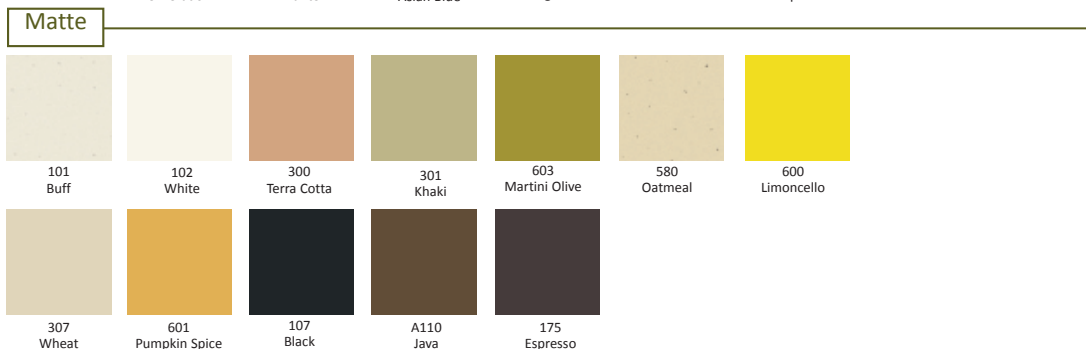
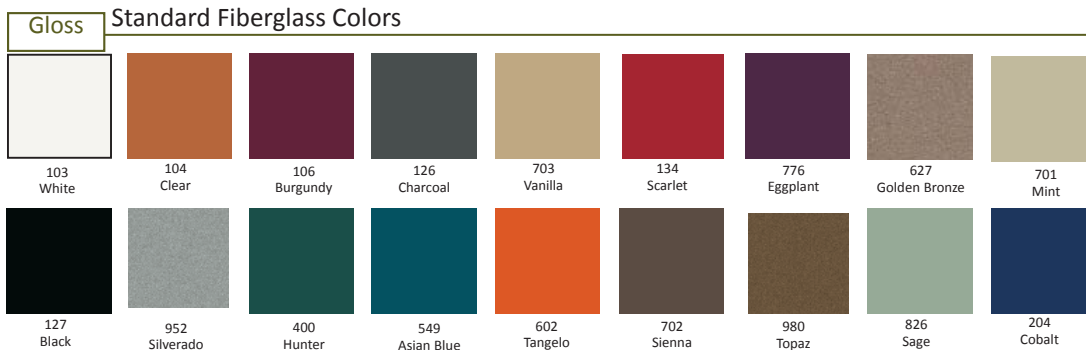
P/N	Top OL	Top OW	OH	Wt. lbs.
F-VNSC-10	10 1/4"	9 1/2"	1 3/4"	2
F-VNSC-14	13 1/2"	12"	2 3/4"	6
F-VNSC-18	16 3/4"	16 3/4"	3 1/4"	7
F-VNSC-22	21 3/4"	21 3/4"	4"	8



### Higher Grade Paint



### Standard Fiberglass Colors



Color variations are inherent characteristics of all planters. Colors are represented as accurately as possible. Photographic procedures may alter the colors and images shown may vary slightly from the photo. For best results please call for a sample.

# Venetian II Tall

This updated version of our Venetian series features reinforced fiberglass, an interior shelf and felt bottom. The eight standard II colors include a UV, scratch resistant finish. Square saucers are available making the Venetian II very durable for exterior applications.



## Venetian II Tall

P/N	Top OL	Top IW	Bottom IW	IH	Wt. lbs.
F-VNT II-15	16 1/2"	12"	9 3/4"	25"	15
F-VNT II-21	21 1/2"	18"	14"	30 1/4"	24.5
F-VNT II-27	27 "	23 "	18 1/4"	35 3/4"	39

## Venetian II Tall Saucers

P/N	Top OL	Top OW	OH	Wt. lbs.
F-VNTSC-14	13 1/2"	12"	2 3/4"	4
F-VNTSC-18	16 3/4"	16 3/4"	3 1/4"	7
F-VNTSC-22	21 3/4"	21 3/4"	4"	10

**Gloss Higher Grade Paint**

103 White	127 Black	954 Golden Pearl	953 Black Pearl	952 Silverado

**Matte**

107 Black	A110 Java	175 Espresso

**Gloss Standard Fiberglass Colors**

103 White	104 Clear	106 Burgundy	126 Charcoal	703 Vanilla	134 Scarlet	776 Eggplant	627 Golden Bronze	701 Mint
127 Black	952 Silverado	400 Hunter	549 Asian Blue	602 Tangelo	702 Sienna	980 Topaz	826 Sage	204 Cobalt

**Matte**

101 Buff	102 White	300 Terra Cotta	301 Khaki	603 Martini Olive	580 Oatmeal	600 Limoncello
307 Wheat	601 Pumpkin Spice	107 Black	A110 Java	175 Espresso		

Color variations are inherent characteristics of all planters. Colors are represented as accurately as possible. Photographic procedures may alter the colors and images shown may vary slightly from the photo. For best results please call for a sample.

# Venetian Bowl/Rectangles



Photo Courtesy of Natural Ambiance.

## Fiberglass Bowl

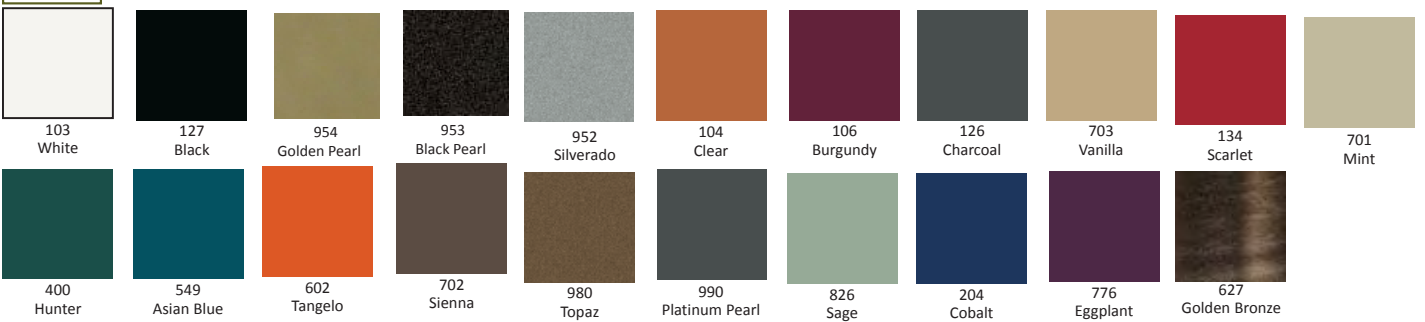
P/N	OD	Top ID	IH	Wt. lbs.
F-VB-16	16"	12 1/4"	5 1/2"	5

## Fiberglass Rectangle

P/N	Top OL	Top IL	Top IW	IH	Wt. lbs.
F-VNR-24	24"	22 1/4"	7"	7 1/2"	10
F-VNR-30	30"	27"	8"	9 1/2"	14
F-VNR-40	39 1/2"	36 1/4"	10 1/2"	12"	17

## Custom Fiberglass Colors

### Gloss



### Matte



Color variations are inherent characteristics of all planters. Colors are represented as accurately as possible. Photographic procedures may alter the colors and images shown may vary slightly from the photo. For best results please call for a sample.

# Jewel

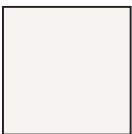


With its clean architectural lines and understated beauty, the Jewel blends mid-century modern style into a distinctly contemporary look. Available in six different sizes of eco-friendly ceramic and in almost every color we make, this container works well in groups or as a stand alone centerpiece.

## Ceramic

P/N	OD	Top ID	Bottom ID	IH	Wt. lbs.	Saucer	Plexi
JL-08	8"	7"	5"	6 1/2"	4		4"
JL-11	11"	10"	6 1/4"	9 3/4"	9	SC-10	7"
JL-13	13"	12"	8"	11 3/4"	15	SC-12	8"
JL-16	15 1/4"	14"	9 1/4"	14"	20	SC-14	10"
JL-18	18"	16 3/4"	11 1/2"	16"	32	SC-16	12"
JL-21	20 1/2"	19"	13"	20 1/2"	45	SC-18	14"

### Gloss



103  
White



127  
Black



126  
Charcoal



703  
Vanilla



134  
Scarlet



776  
Eggplant



204  
Cobalt



990  
Platinum Pearl



125  
Gray



400  
Hunter



549  
Asian Blue



602  
Tangelo



702  
Sienna

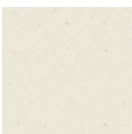


106  
Burgundy

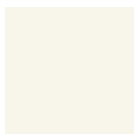


826  
Sage

### Matte



101  
Buff



102  
White



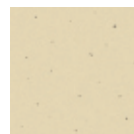
300  
Terra Cotta



301  
Khaki



603  
Martini Olive



580  
Oatmeal



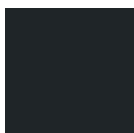
600  
Limoncello



A902  
Slate



307  
Wheat



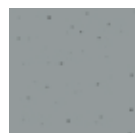
107  
Black



A110  
Java



175  
Espresso



303  
Oyster



601  
Pumpkin Spice



A901  
Sea Bluff

Color variations are inherent characteristics of all planters. Colors are represented as accurately as possible. Photographic procedures may alter the colors and images shown may vary slightly from the photo. For best results please call for a sample.

# Aegean

Taking its name from the Aegean sea where the classic ceramics of ancient Greek civilization were first made, the Aegean is a timeless design that has been with Gainey for many years. Available in several sizes of eco-friendly ceramic and fiberglass, this versatile container allows you to stylishly display almost any kind of plant.



## Ceramic

P/N	OD	Top ID	Bottom ID	IH	Wt. lbs.	Saucer	Plexi
AGN-08	9 1/2"	7 1/4"	4 3/4"	6 1/2"	6		5"
AGN-12	14"	11"	6 3/4"	11 3/4"	15		7"
AGN-14	16 1/2"	13"	8"	13 1/2"	30	SC-10	8"
AGN-16	18 1/2"	14 1/4"	10 1/2"	16 1/2"	36	SC-12	10"
AGN-20	23"	16 3/4"	13"	20 1/2"	70	SC-16	14"
AGN-24	27"	19"	14 1/2"	23 1/2"	115	SC-18	16"

## Fiberglass

P/N	OD	Top ID	Bottom ID	IH	Wt. lbs.	Plexi
F-AGN-08	9"	7 1/2"	5"	7"	2	6"
F-AGN-12	13 1/2"	10"	7"	12"	4	7"
F-AGN-14	16"	13 1/4"	8 1/4"	14"	6	8"
F-AGN-16	18 1/2"	13 3/4"	11 1/4"	16 3/4"	8	10"
F-AGN-20	24"	15 3/4"	13 3/4"	21"	10	14"
F-AGN-24	27"	17 1/2"	16 1/2"	23"	17	16"
F-AGN-30*	36 1/2"	25 3/4"	23 1/4"	29 3/4"	31	22"
F-AGN-36*	46"	34"	28"	35 1/2"	45	26"

\*Requires special order and deposit.

**Gloss**

103 White	104 Clear	106 Burgundy	125 Gray	126 Charcoal	127 Black	134 Scarlet	776 Eggplant	400 Hunter	549 Asian Blue	602 Tangelo
990 Platinum Pearl [C only]	826 Sage	204 Cobalt	701 Mint [C only]	702 Sienna [C only]	703 Vanilla [C only]	627 *Golden Bronze [F only]	952 Silverado [F only]	980 Topaz [F only]	954 Golden Pearl [F only]	953 Black Pearl [F only]

**Matte**

101 Buff	102 White	107 Black	A110 Java	175 Espresso	300 Terra Cotta	301 Khaki	303 Oyster
307 Wheat	580 Oatmeal	600 Limoncello	601 Pumpkin Spice	603 Martini Olive	A901 Sea Bluff [C only]	A902 Slate [C only]	

Color variations are inherent characteristics of all planters. Colors are represented as accurately as possible. Photographic procedures may alter the colors and images shown may vary slightly from the photo. For best results please call for a sample.

# Gainey Grande



If you are looking for a bold piece to define any room, look no further than the Grande. Available in three sizes of fiberglass and various colors, this substantial container creates a room divider or an attention-grabbing focal point.

## Fiberglass

P/N	OD	Top ID	Bottom ID	IH	Wt. lbs.	Plexi
F-GG-39*	23 1/2"	13 3/4"	13"	39"	17	12"
F-GG-44*	28 1/4"	16"	17"	44"	21	16"
F-GG-52*	32"	20"	20"	52"	50	20"

\*Requires special order and deposit.

## Custom Fiberglass Colors

**Gloss**

103 White	127 Black	954 Golden Pearl	953 Black Pearl	952 Silverado	104 Clear	106 Burgundy	126 Charcoal	703 Vanilla	134 Scarlet
400 Hunter	549 Asian Blue	602 Tangelo	702 Sienna	980 Topaz	701 Mint	826 Sage	204 Cobalt	776 Eggplant	627 Golden Bronze

**Matte**

101 Buff	102 White	300 Terra Cotta	301 Khaki	603 Martini Olive	580 Oatmeal
107 Black	A110 Java	175 Espresso	601 Pumpkin Spice	307 Wheat	600 Limoncello

Color variations are inherent characteristics of all planters. Colors are represented as accurately as possible. Photographic procedures may alter the colors and images shown may vary slightly from the photo. For best results please call for a sample.

# China Bowl

The China Bowl is our modern take on a timeless shape. Available in both eco-friendly ceramic and fiberglass, this widely recognized and beloved shape is designed to easily accept standard growing pots.



## Ceramic

P/N	OD	Top ID	Bottom ID	IH	Wt. lbs.	Saucer	Plexi
CB-08	9 1/4"	7 1/2"	6"	6 3/4"	7		6"
CB-10	11 1/2"	10"	8"	9 1/4"	13		7"
CB-12	13 1/2"	11 3/4"	9 1/2"	11 1/4"	21	SC-10	10"
CB-14	16"	13"	11 1/2"	14"	31	SC-12	12"
CB-16	19 1/2"	15 3/4"	13"	15 1/2"	42	SC-14	12"
CB-20	23 1/2"	20"	15 1/2"	18"	63	SC-18	14"
CB-24	26 3/4"	23 1/2"	17"	21"	106	SC-20	18"

## Fiberglass

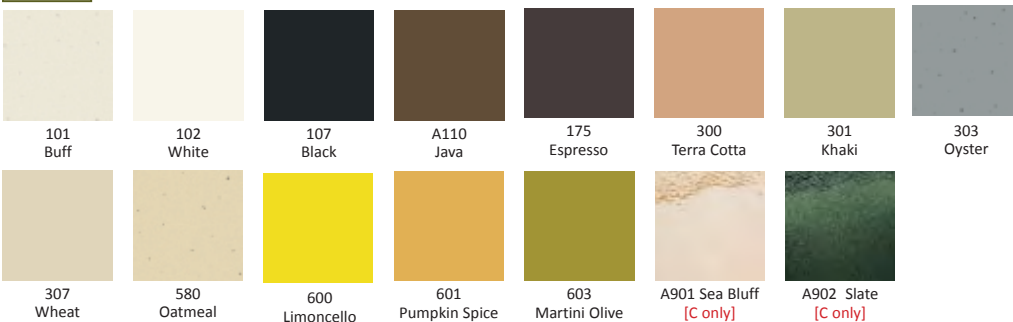
P/N	OD	Top ID	Bottom ID	IH	Wt. lbs.	Plexi
F-CB-30*	32"	26"	20 1/2"	23"	35	20"
F-CB-36*	40"	33"	27"	31 1/2"	40	26"
F-CB-48*	54"	44"	34"	34"	50	33"

\*Requires special order and deposit.

### Gloss



### Matte



Color variations are inherent characteristics of all planters. Colors are represented as accurately as possible. Photographic procedures may alter the colors and images shown may vary slightly from the photo. For best results please call for a sample.

# Portofino

Our largest collection, the Portofino comes in three eco-friendly ceramic shapes and eight different fiberglass looks, from small to tall and square to round. Depending on the finish you choose, it is sure to work well in both contemporary and classic environments.



## Ceramic

P/N	OD	Top ID	Bottom ID	IH	Wt. lbs.	Saucer	Plexi
PRT-08	8"	7"	6"	5 3/4"	5		6"
PRT-10	11 1/4"	9 1/4"	7 1/2"	8"	11		8"
PRT-14	15 1/2"	12"	10 3/4"	11 1/2"	23	SC-14	12"
PRT-18	19"	16"	14"	14 1/2"	42	SC-16	14"
PRT-22	23 3/4"	21 1/2"	17 1/2"	18"	67	SC-20	18"
PRT-26	29 1/2"	26"	21 1/2"	26"	121	SC-24	20"

## Fiberglass

P/N	OD	Top ID	Bottom ID	IH	Wt. lbs	Plexi
F-PRT-08	8 1/2"	7"	6 1/2"	7"	4	6"
F-PRT-10	11"	9"	8 1/2"	8 1/2"	7	8"
F-PRT-14	14 1/2"	11 1/2"	11 1/2"	11"	10	10"
F-PRT-18	19"	16"	15 1/2"	15"	12	14"
F-PRT-22	21 1/2"	18 1/2"	18"	18 3/4"	15	18"
F-PRT-26	29 1/2"	26"	23"	23"	18	22"
F-PRT-30*	35 1/2"	30 1/2"	27 1/4"	26"	32	26"
F-PRT-36*	43"	36 1/2"	34"	28 1/2"	60	33"
F-PRT-48*	56"	48"	45"	34"	80	44"

\*Requires special order and deposit.

### Gloss



### Matte



Color variations are inherent characteristics of all planters. Colors are represented as accurately as possible. Photographic procedures may alter the colors and images shown may vary slightly from the photo. For best results please call for a sample.

# PORTOFINO

All items on this page are special order only.



## Rectangles Fiberglass

P/N	Top OL	Top IL	Top IW	IH	Wt. lbs.
FR-PRT-24	27"	24"	12 1/2"	12 1/2"	12
FR-PRT-30	33"	30"	15 1/2"	15 1/2"	18
FR-PRT-36	39 1/2"	36"	19"	19"	22
FR-PRT-48	52"	48"	22"	22 1/2"	32
FRPRT48X12	52"	48"	12 1/2"	12"	20
FRPRT48X22	52"	48"	12 1/2"	22"	22



## 1/4 Round Fiberglass

P/N	OD	Top ID	Bottom ID	IH	Wt. lbs.
F1/4-PRT-26	14 1/2"	9 3/4"	11"	23"	8

## 1/2 Round Fiberglass

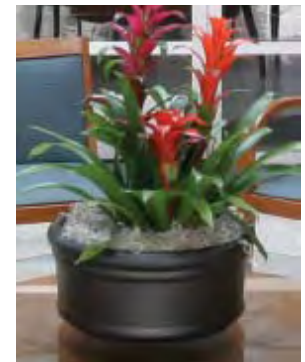
P/N	OD	Top ID	Bottom ID	IH	Wt. lbs.
FH-PRT-22	23"	9"	9 3/4"	18 3/4"	7
FH-PRT-26	29"	12"	11 3/4"	22 1/2"	10
FH-PRT-30	35"	15"	14 1/2"	26"	11

## 3/4 Round Fiberglass

P/N	OD	Top ID	Bottom ID	IH	Wt. lbs.
F3/4-PRT-26	29 1/2"	11"	11 1/2"	22"	18

## Low Profile Ceramic

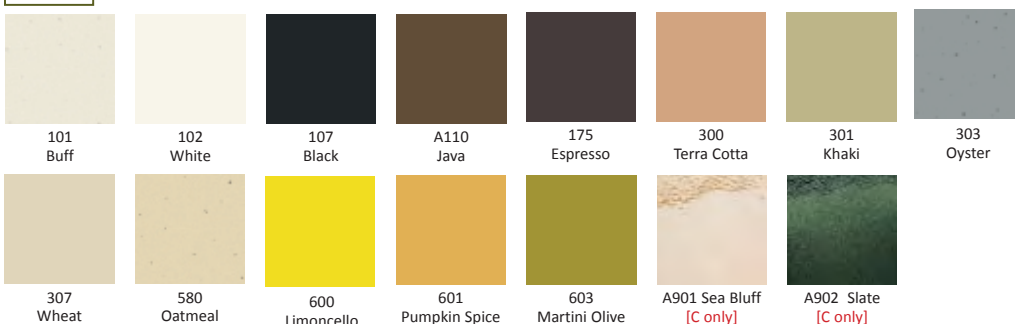
P/N	OD	Top ID	Bottom ID	IH	Wt. lbs.	Saucer	Plexi
P-12	12 1/2"	11"	9 3/4"	5"	8	SC-10	10"
P-16	17"	14 3/4"	13 1/4"	7 1/4"	21	SC-14	14"
P-22	23"	20"	17 1/2"	10 3/4"	47	SC-20	18"
P-26	29"	25"	22"	13"	83	SC-24	22"



### Gloss



### Matte



Color variations are inherent characteristics of all planters. Colors are represented as accurately as possible. Photographic procedures may alter the colors and images shown may vary slightly from the photo. For best results please call for a sample.

# Mesa Bowl

With their classic silhouettes, the Mesa Bowl fits perfectly on table tops, stairs or anywhere you may need a bold splash of color. Offered in fiberglass only.



## Mesa Bowl

P/N	OD	Top ID	Bottom ID	IH	Wt. lbs.	Plexi
F-MB-16	16 1/4"	12 "	10 1/2"	5 1/2"	3.25	8"

**Gloss**

103 White	104 Clear	106 Burgundy	126 Charcoal	703 Vanilla	134 Scarlet	776 Eggplant	627 Golden Bronze	701 Mint
127 Black	952 Silverado	400 Hunter	549 Asian Blue	602 Tangelo	702 Sienna	980 Topaz	826 Sage	204 Cobalt

**Matte**

101 Buff	102 White	300 Terra Cotta	301 Khaki	603 Martini Olive	580 Oatmeal
307 Wheat	601 Pumpkin Spice	107 Black	A110 Java	175 Espresso	600 Limoncello

Color variations are inherent characteristics of all planters. Colors are represented as accurately as possible. Photographic procedures may alter the colors and images shown may vary slightly from the photo. For best results please call for a sample.

# Flower Bowl

Perfect for groupings or scattered throughout a terraced landscape, the Flower Bowl's striking shape makes it ideally suited for low-growing plants and flowers. Available in both eco-friendly ceramic and fiberglass.



## Ceramic

P/N	OD	Top ID	Bottom ID	IH	Wt. lbs.	Saucer	Plexi
FB-12	13 1/4"	11 1/2"	7"	4 1/4"	8	SC-10	8"
FB-16	17 1/2"	15 1/4"	9"	5 1/2"	15	SC-10	8"
FB-20	21 1/2"	19 3/4"	10 1/2"	6 3/4"	22	SC-12	10"
FB-24	25"	22 3/4"	11 1/2"	8 1/4"	36	SC-14	12"
FB-28	28 1/2"	26 1/2"	13 3/4"	9 3/4"	52	SC-16	14"
FB-32	33 1/2"	31 3/4"	16 1/4"	11 1/2"	68	SC-20	16"

## Fiberglass

P/N	OD	Top ID	Bottom ID	IH	Wt. lbs.	Plexi
F-FB-20	20-1/2"	19 1/4"	11"	6 3/4"	6	10"
F-FB-24	25-1/4"	22 3/4"	13"	8 1/2"	11	12"
F-FB-28	29"	26 1/4"	14 1/4"	10"	13	14"
F-FB-32*	33"	27"	17"	11"	18	16"
F-FB-36*	40"	35 1/2"	20"	14 1/4"	21	20"
F-FB-48*	53"	45"	26"	17 1/2"	35	26"
F-FB-60*	66 3/4"	56"	34 1/2"	23 1/4"	50	33"

\*Requires special order and deposit.

**Gloss**

103 White	104 Clear	106 Burgundy	125 Gray	126 Charcoal	127 Black Gloss	134 Scarlet	776 Eggplant	400 Hunter	549 Asian Blue	602 Tangelo
990 Platinum Pearl [C only]	826 Sage	204 Cobalt	701 Mint [C only]	702 Sienna [C only]	703 Vanilla [C only]	627 *Golden Bronze [F only]	952 Silverado [F only]	980 Topaz [F only]	954 Golden Pearl [F only]	953 Black Pearl [F only]

**Matte**

101 Buff	102 White	107 Black	A110 Java	175 Espresso	300 Terra Cotta	301 Khaki	303 Oyster
307 Wheat	580 Oatmeal	600 Limoncello	601 Pumpkin Spice	603 Martini Olive	A901 Sea Bluff [C only]	A902 Slate [C only]	

Color variations are inherent characteristics of all planters. Colors are represented as accurately as possible. Photographic procedures may alter the colors and images shown may vary slightly from the photo. For best results please call for a sample.

# Azalea

When you want to showcase plants, the Azalea is the obvious choice. With its simple beauty and contemporary lines, this is the container that fits every environment, both indoors and out.

Available in eco-friendly ceramics and fiberglass.



## Ceramic

P/N	OD	Top ID	Bottom ID	IH	Wt. lbs.	Saucer	Plexi
AZ-08	8 1/2"	6 3/4"	6"	5 1/2"	5	SC-08	6"
AZ-10	11 1/4"	9 1/4"	8 1/4"	8 1/2"	10	SC-10	8"
AZ-14	15 5/8"	13 1/4"	11"	11 1/2"	19	SC-12	10"
AZ-16	18 1/2"	15 3/4"	13 1/4"	13 3/4"	30	SC-14	12"
AZ-18	20"	17 1/2"	14 3/4"	15 1/4"	39	SC-16	14"
AZ-22	23"	21 1/4"	17 1/2"	18 1/4"	63	SC-20	18"
AZ-26	29"	26 1/2"	21 1/2"	22"	120	SC-24	20"

## Fiberglass

P/N	OD	Top ID	Bottom ID	IH	Wt. lbs.	Plexi
F-AZ-30*	32"	28"	25"	25"	19	24"
F-AZ-36*	40 1/2"	35"	31 1/2"	30 3/4"	45	28"

\*Requires special order and deposit.

### Gloss

103 White	104 Clear	106 Burgundy	125 Gray	126 Charcoal	127 Black Gloss	134 Scarlet	776 Eggplant	400 Hunter	549 Asian Blue	602 Tangelo
990 Platinum Pearl [C only]	826 Sage	204 Cobalt	701 Mint [C only]	702 Sienna [C only]	703 Vanilla [C only]	627 *Golden Bronze [F only]	952 Silverado [F only]	980 Topaz [F only]	954 Golden Pearl [F only]	953 Black Pearl [F only]

### Matte

101 Buff	102 White	107 Black	A110 Java	175 Espresso	300 Terra Cotta	301 Khaki	303 Oyster
307 Wheat	580 Oatmeal	600 Limoncello	601 Pumpkin Spice	603 Martini Olive	A901 Sea Bluff [C only]	A902 Slate [C only]	

Color variations are inherent characteristics of all planters. Colors are represented as accurately as possible. Photographic procedures may alter the colors and images shown may vary slightly from the photo. For best results please call for a sample.

# Cylinder

Pioneered by Gainey, the Cylinder is truly the one that started it all! With its iconic design, it can make a strikingly modern statement with endless possibilities. Available in eco-friendly ceramic and fiberglass.



## Ceramic

P/N	OD	Top ID	Bottom ID	IH	Wt. lbs.	Saucer	Plexi
AC-08S	8 1/4"	7 1/2"	7"	5 3/4"	4	SC-08	8"
AC-10	11"	10 1/4"	10"	9 1/2"	10	SC-10	10"
AC-12	13"	11 3/4"	11"	11 1/4"	15	SC-12	12"
AC-14	15"	14 1/4"	13"	13 1/4"	25	SC-14	14"
AC-16	17 1/2"	16 3/4"	15 1/2"	15 1/4"	34	SC-16	16"
AC-20	20 1/2"	18 1/2"	18 1/2"	19 1/2"	70	SC-20	18"
AC-24	24 1/2"	22 3/4"	22 3/4"	21 1/2"	105	SC-24	22"

## Fiberglass

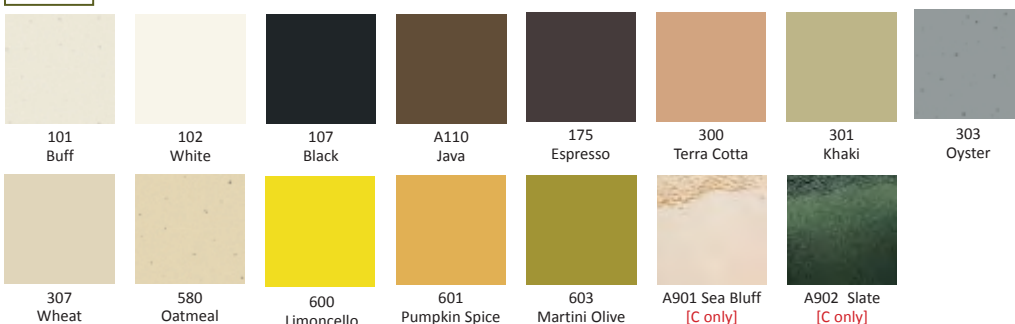
P/N	OD	Top ID	Bottom ID	IH	Wt. lbs.	Plexi
F-AC-24*	24 3/4"	23"	23"	21 1/4"	21	22"
F-AC-30*	30"	26"	30"	25"	35	28"
F-AC-36*	38"	36"	36"	30"	60	33"

\*Requires special order and deposit.

### Gloss



### Matte



Color variations are inherent characteristics of all planters. Colors are represented as accurately as possible. Photographic procedures may alter the colors and images shown may vary slightly from the photo. For best results please call for a sample.

# Ash and Trash



## Fiberglass Portofino Trash

P/N	OD	Top ID	Bottom ID	IH	Wt. lbs.
F-PRT-TR	18 1/2"	15"	14"	29 1/2"	20
F-PRT-SJ	11"	9"	8"	20"	7

All items on this page are special order only. See color availability on previous page. Lids and rings are included.

## Ceramic Sand Jar

P/N	OD	Top ID	Bottom ID	IH	Wt. lbs.
AC-SJ	10 1/4"	9"	8 3/4"	19"	22

Sand sifters and trays are available at an additional charge.



## Fiberglass Venetian II Trash

P/N	Top OL	Top IW	Bottom IW	IH	Wt. lbs.
F-VNTRII-15	16 1/2"	12 1/2"	9 1/2"	24"	19
F-VNTRII-21	21 1/2"	18"	14"	30 1/4"	28

All items on this page are special order only. See color availability on previous page. Lids and rings are included.

# GFRC

There is nothing like the strength of Glass Fiber Reinforced Concrete (GFRC) to stand up to the harsh elements of the great outdoors. GFRC blends fiberglass and reinforced concrete, so it is lighter in weight than concrete and more durable than fiberglass.

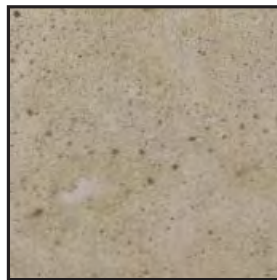


P/N	OD	Top ID	Bottom ID	IH	Wt. lbs.
G-AGN-24	27"	17 1/2"	10 1/2"	23"	150
G-AGN-30	36 1/2"	25 3/4"	13"	29 3/4"	280
G-AGN-36	46"	34"	14 1/2"	35 1/2"	410

P/N	Top OL	Top IW	Bottom IW	IH	Wt. lbs.
G-F-VN-18	18"	14 1/2"	13 1/2"	16 1/4"	105
G-F-VN-22	23 1/4"	19"	16 3/4"	22 1/4"	180
G-F-VN-30	30"	23 1/4"	22 1/2"	26 1/2"	275



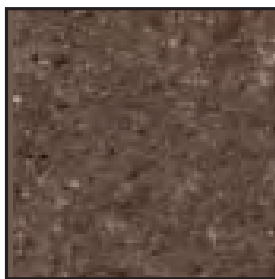
Snow



Limestone



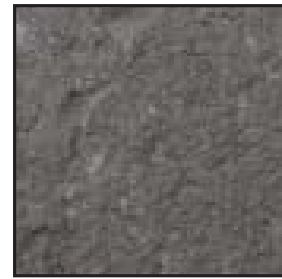
Wet Sand



Walnut



Clay



Granite

Color variations are inherent characteristics of all planters. Colors are represented as accurately as possible. Photographic procedures may alter the colors and images shown may vary slightly from the photo. For best results please call for a sample.

# TERMS & CONDITIONS

## CREDIT TERMS:

- Net 30 for established customers with terms already set up.
- All orders for new and/or non-term customers will be billed on prepayment terms. (VISA, MC or AMEX).
- All prepay orders will be billed at the time the order is placed.
- 50% deposit is required on receipt of all custom orders.

## SHIPPING:

- All orders are FOB Gainey Ceramics.
- All orders under \$500.00 that need to be palletized will be charged a \$50.00 handling fee.

## BREAKAGE:

- Credit and/or replacement cannot be issued unless breakage is noted on the delivery receipt.
- If breakage occurs, please notify Gainey Ceramics within 48 hours in order to process a claim.
- All damages must be inspected and noted on the delivery receipt, both the driver copy and your copy and a claim filed with the carrier.
- Fax a copy of the delivery receipt to Gainey Ceramics at 909-596-9337. Contact your Gainey Ceramics customer service representative immediately.

## RETURN AND EXCHANGE POLICY:

- All items are made to order.
- No product may be returned to Gainey Ceramics without written consent.
- Authorized returns are subject to a 25% restocking fee.
- All returned goods must be sent back prepaid within 3 days of receiving our written consent.
- Credit is subject to inspection by our receiving department.
- Any product not returned in resalable condition will not be credited the full amount.
- All unauthorized returns will be returned to the customer freight collect.

## CANCELLATIONS:

- Orders not canceled within 24 hours will incur charges.
- Care must be used on all orders in specifying quantities and colors, as no allowances will be made for returns unless it is our mistake in filling the order.
- Orders that are already palletized and ready to ship will incur a \$100 charge for changes and/or cancellations.

## DISCLAIMERS:

- All colors are represented as accurately as possible.
- Photographic procedures may alter the hues and textures.
- Shape, texture, and color variations are inherent characteristics of all ceramic and fiberglass planters.
- Planters/containers received may differ from sample chip or sample planter/container submitted.
- Any questions regarding acceptability of products must be resolved **prior to installation, no adjustments will be made after installation.** Please contact a company representative if you have any questions.
- Gainey Ceramics assumes no risk for damage incurred in transit.
- All items are shipped at purchaser's risk.
- Containers that are found to be defective will be repaired or replaced at Gainey Ceramics' discretion.
- Products and finishes not shown on the web site or in the current Gainey catalogs are considered to be special order items. Please contact Gainey Ceramics to see if these products and finishes are still available.
- \* Ceramic glazes and fiberglass paint reflect light differently, this will result in colors not being exact matches. Please request samples if you are blending fiberglass and ceramic products on the same job.

## PROCEDURE TO MAKE A CLAIM:

- The original purchaser must notify Gainey Ceramics in writing within 30 days of the occurrence of any manufacturer's defect.
- No claim will be honored without the product having been inspected by a Gainey Ceramics representative.
- Gainey Ceramics may require a photo as a proof of claim.

## RECOMMENDATIONS FOR OUR PRODUCTS:

- We strongly recommend drilling and sealing all containers that need to be direct planted. Please speak with your representative about reinforcing fiberglass planters that will be direct planted.
- Fiberglass planters that are direct planted must be sealed, reinforced and drilled.
- Fiberglass planters should be washed and waxed on a regular basis.
- Ceramic products will craze, to keep them looking their best a regular washing using a product like Lime Away, followed by the use of a good quality tile sealer will keep them looking their best for years.
- Gainey Ceramics does not recommend the painting of its ceramic planters and will not warranty them.
- Sealing is available upon request for an additional 5% charge.
- If our fiberglass planters are used outdoors and are exposed to freezing temperatures, drainage holes should be supplied and will incur a 5% charge.
- Ceramic and Fiberglass planters will not be drilled unless specified.
- Ceramic planters should not be subject to freezing temperatures.
- \* Planters should never be placed on any surface as moisture from condensation may damage that surface. We recommend the use of saucers, cork mats or plexi trivits to elevate planters from all surfaces.

Colors are represented as accurately as possible. Photographic procedures may slightly alter the hues and textures. Please contact your authorized Gainey Ceramics Container distributor for samples.



All of Gainey's ceramic products are  
proudly made in the USA.

**Gainey Ceramics Inc.**  
**1200 Arrow Hwy.**  
**La Verne, CA 91750**  
**p: 800.451.8155**  
**f: 909.596.9337**  
**[www.gaineyceramics.com](http://www.gaineyceramics.com)**

